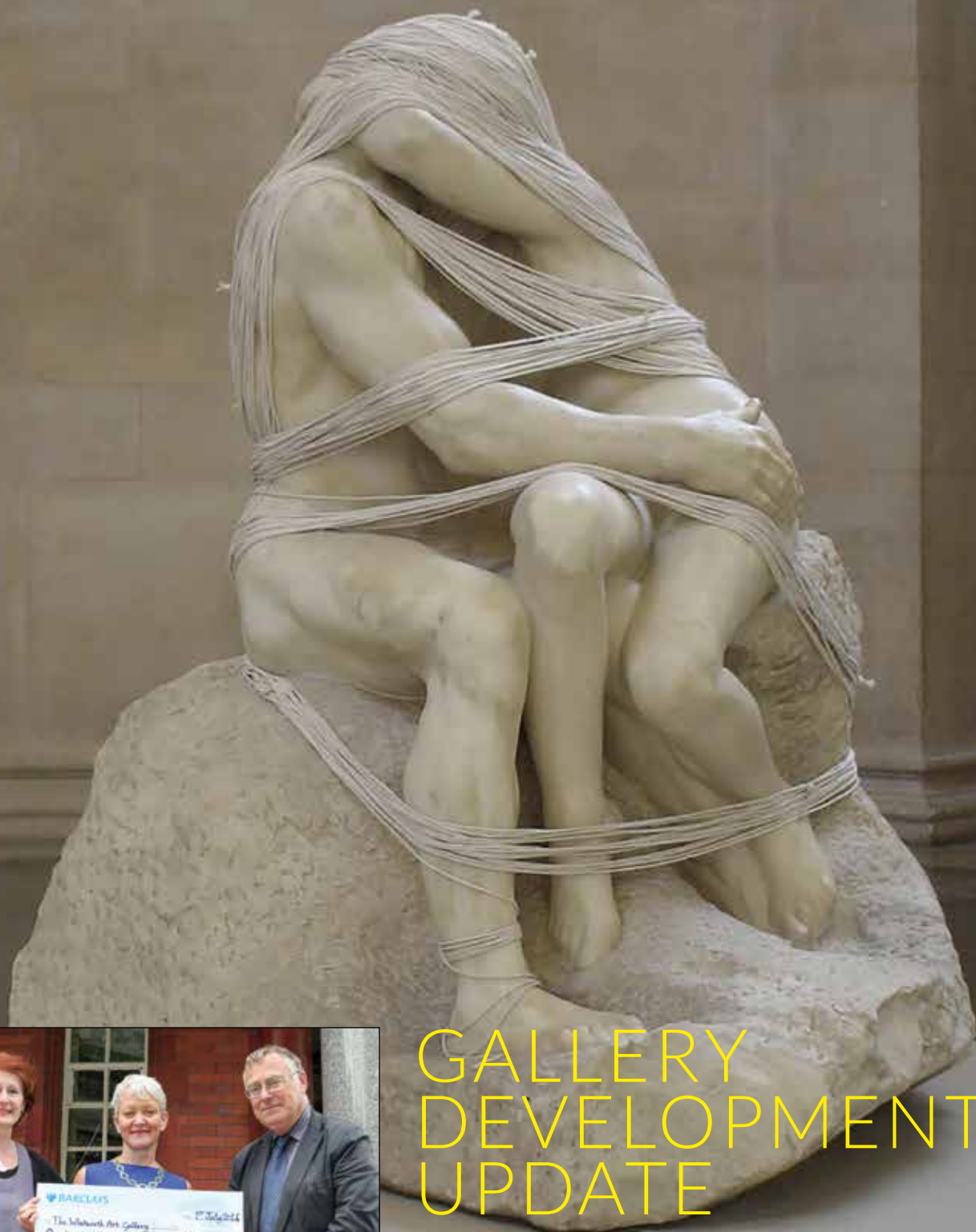


friends' perspective

 FRIENDS
OF THE
WHITWORTH



GALLERY DEVELOPMENT UPDATE

Friends' contribution to gallery development reaches over a quarter of a million pounds - see page 2

Pictured: Gill Crook and Stuart Halsall hand over a cheque for £155,361.00 to Dr Maria Balshaw representing the money Friends have raised towards the new development of the Gallery.

Our beautiful new gallery opens soon...

Friends handover cheque to fund the fitting out of the Collections Access Area, taking total Friends' contributions to the new development to over £250,000.

Soon we'll all be sharing in a beautiful Gallery, redesigned by architects MUMA – McInnes Usher McKnight Architects - to embrace its park and the people who use it – an internationally important Gallery fit for 21st century Manchester. Public space will be doubled with more exhibition space, a lovely new café 'in the trees,' a restored Grand Hall, a Learning Studio and a Collections Access Area for all to access the wonderful Whitworth collection more easily.

Speaking at the cheque handover Stuart Halsall, chairman of the Friends said: *'I am delighted that the Friends' generosity has allowed us to contribute £100,000 from our Capital Development Appeal to the Gallery.'*

With Ken Andrews' legacy of £55,361 this will fund the fitting out of the Collections Access Area. Ken Andrews was a consulting engineer, born and bred in Manchester. He was an active member of many local and national charities including the Friends of the Whitworth and the Hallé orchestra. Dr Maria Balshaw, Director of the Whitworth Art Gallery praised the Friends' contribution and their enthusiasm and tireless support of the Gallery.



The regional press launch in the café in the trees.

Together with the £100,000 previously contributed in 2009 for pre-bid expenses such as the all important architects' design competition, the Friends have now contributed more than a quarter of a million pounds to the design and build of the Gallery's new facilities. You have also held art exhibitions, open gardens, tea parties, suppers, sales of pottery and paintings - thank you Friends - see you at the reopening.



The Grand Hall

The Gallery will reopen in the autumn with a fantastic weekend of activities. You will also have seen details of the opening shows in the last issue of 'friends' perspective.' There is now a new opening date to be announced in early September.

Here is a miscellany of pictures of the building taking shape - completed version soon!



Old (inset) and new storage facilities



Patterned brickwork



Sarah Price's garden plans



Restored art deco lamp

A message to the Friends...

from Alex Rinsler, Producer, Reopening Weekend Celebrations

The autumn is soon upon us, and it seems like just yesterday that we closed the doors to the Whitworth with 6 White Horses. Many of you joined for Whitworth Weekending, in fact there were 23,000 people, which broke attendance records. I had the job of coordinating the closing weekend, and after a short break have returned to Manchester to look towards the reopening.



There is so much to look forward to: Cornelia Parker's solo show (see image on the cover), a spectacular installation by leading Chinese-born artist Cai Guo-Qiang, alongside some of the best of the collection. There will be talks and performances in the Grand Hall, newly restored to its 1908 glory, with highlights including performances by Manchester Camerata, and a literary salon with writers and poets from far and wide. We will also host a series of responses to the opening show by an array of academics from across the University of Manchester, in the new Study Centre. The full programme for the reopening weekend will be available on our website in September: at the time of writing, 23 Friends have signed up to be Ambassadors over the weekend, which is fantastic. There can be no better moment to invite people to join.

A week before the public opening, we would like to invite you to what we're calling the Friends and Family Preview. This is your chance to see the new Whitworth before everyone else, and an invaluable opportunity for us to test the building. You have the best interests of the Whitworth at heart and your thoughts will help us get it right.

I wish you well over the summer and look forward to meeting again to welcome in the new Whitworth.



Works from the opening exhibitions. Above: Dexter Dalwood's *Neverland*, 1999. Below: Richard Hamilton's *Fashion Plate*, *Cosmetic Study*



Prestigious Pilkington

Arts broadcaster Tim Marlow is your 46th Pilkington lecturer

It will be in January 2015 rather than this November. We thought it wise to let the systems settle in at the new Gallery.

The lecture and supper will be on Thursday, 29 January 2015.



Visit to Saxony with Dresden

Eve and Duncan Templeton give their personal account...

This was a trip of complete contrasts; from the cool modernist design of the Bauhaus in Dessau, to the over-the-top Baroque excesses of the Zwinger palace in Dresden; from the startlingly eccentric Hundertwasser apartments in Magdeburg to the nearby majestic cathedral.

The main destination of our visit, Dresden, still deserves its title of 'Florence on the Elbe' despite the terrible destruction in World War II. Many of the Baroque palaces have been rebuilt in the original style and are now museums. The main symbol of the regeneration, the Frauenkirche, sits solidly in the main square and acted as landmark to our adjacent hotel. Restoration finished in 2005, and black stones in the paler sandstone structure indicated original masonry. Some of us climbed the dome to the viewing platform via a spiral ramp between the walls.

One of the highlights for everyone in Dresden was the superlative collection of paintings in the Alte Meister Galerie at the Zwinger Palace. The Albertinum Palace housed modern paintings and sculpture; the haunting war paintings of Otto Dix were memorable.

Musical tastes were catered for; 'Cosi fan tutti' at the Semper Oper, a choral concert by the renowned Kreuzchor, and an organ recital in the Hofkirche. We enjoyed amazing views of 'Saxon Switzerland' from a trip down the Elbe in an antique paddleboat, and also from the fortress of Königstein situated on a volcanic plug above the river.

We must thank our guide Birgitta Hoffman for informing and entertaining us during a fascinating tour.



Eve and Duncan Templeton



View from top of Frauenkirche



Königstein



Hundertwasser Apartments, Magdeburg



Master's House, Bauhaus



Frauenkirche



Briefing from Birgitta at the Schloss



Another Manchester First

Dr James Hopkins is the University's History and Heritage Manager and he is building on the considerable progress on heritage work in recent years initiated by the late Professor John Pickstone.

Said James: 'I am delighted to be taking on such a significant role at the university – my role exists at some universities overseas, especially in the US, but as far as we know mine is the only such current full-time role in the UK.'

Appointed in August 2013 James has been busy in three main areas – research on the history of the University within its academic, social and cultural context; engaging audiences including students, alumni, staff and the public with the University's past; conserving the University's history, most notably through its historic built environment and the collections of art, artefacts and archives which are not housed in the Manchester Museum, Whitworth Art Gallery and John Rylands Library.



'There are lots of opportunities for the Friends to find out more about the University's history and heritage work either through the website, historical tours or the heritage volunteer scheme,' James explained. For more, go to www.manchester.ac.uk/heritage

Ed.'s note: I joined a campus tour recently and found it of great interest. Even though I am an alumni there's always more to learn and the students on the tour had an excellent introduction to illustrious university academics and the history of the university. Think an exhibition or even a museum would be a wonderful idea!

The Visitor team at the Whitworth also have tours of the past, present and future of the Gallery. The tours are based in the Park – for more details, see:
www.whitworth.manchester.ac.uk

Treasures on Campus



Margaret Pilkington and the filing basket

From time to time in previous newsletters we've highlighted treasures on campus – from an art trail around the UMIST campus and the 'discovery' of the Jacob Epstein bust of Chaim Weizmann.

A recent little heritage story – I spied that an attractive willow filing basket had been discarded when the Friends were relocating from the Gallery to the Manchester Museum (we're now at Manchester Art Gallery!) – as a magpie I reclaimed it only to realise its place in the WAG story as the one used by Margaret Pilkington, honorary director of the Gallery and founder of the Friends.

Poignant Treasures on show

Buried treasures surface in the exhibition **Whitworth Park: Pleasure, Play and Politics**



A toy soldier and a real gun are poignant 'finds' discovered by the team of University of Manchester archaeologists led by Dr Melanie Giles in Whitworth Park. They are amongst other artefacts on display from rare bottles from local dairies, piles of mussel and oyster shells, clay pipes, children's toys, including marbles and the tin soldier.

'The tin soldier was the best find for me,' Melanie says. 'He's broken and you can see the golden colour of the paint. You can tell he's been loved and played with and then lost. It moves me because it was found in a layer of the lake from 1910, so it may have belonged to a little boy who grew up and became a soldier himself.'

Imagination ran wild about the gun – it was x-rayed and turned out to be a starter pistol, probably used for one of the many sporting events held in the park. The exhibition runs until October 5, 2014 at Manchester Museum.



Gill Crook, editor of Friends' Perspective

The Scandinavian Influence

We have a new Gallery in a Park – here Rosemary Marsh considers the Scandinavian influences and inspiration when Margaret Pilkington was Honorary Director.

When Margaret Pilkington visited Scandinavia in 1932 she was forty, had been a member of the Whitworth committee since 1925 and was beginning to develop a vision of her ideal art gallery. She set off by boat from Newcastle, called in at Oslo and then went on to Gothenburg where she was met by her cousin, Mona Roth and Mona's Swedish husband, Stig. She stayed with them and they took her out to explore the countryside and visit museums and historic buildings.

Margaret was enchanted by what she saw, loved the clear Northern light and the cool elegance of Scandinavian architecture and design. Stig Roth was a Curator at the Röhsska Museum in Gothenburg, so she had a 'behind the scenes' tour and met the architect who had been responsible for the building, which opened in 1923.

Afterwards, she wrote in her diary: 'I have come to the conclusion that a good museum or gallery should be a place where visitors feel comfortable and if it stands in a garden or park should be able to get glimpses of the outside world and enjoy the beauty of the outdoors as a counterpoint to what is within.' She also agreed with the views of her tutor at the Central School of Art, Professor William Lethaby who had said in a lecture in Manchester, that he believed that Art

is a natural part of everyday life and that museums and galleries were not just for the highly educated few but should, amongst other things, 'aim to provide the amenities of a private house such as seats.'

Margaret visited Sweden again in 1934 and it was the first place she chose to visit after the war, when she commented especially on the gardens at museums, their cafes, restaurants tea rooms and lecture theatres: 'Light colour schemes, flowers, greenery, and even music, the intelligence in methods of display and high levels of good taste combine to make Swedish museums particularly attractive to the public.'

It was a theme which she chose to repeat in a paper given at the Museums Association Conference in Manchester in 1947 where two Swedish museum directors were amongst the speakers; a small exhibition showing recent developments in Swedish and American museums was put on at the City Art Gallery. It is not surprising that there were signs of Scandinavian influences when changes were made to the Whitworth in the 1960s.

Sir Stanley Spencer's drawing of Margaret Pilkington is in *Whitworth People*, one of the opening shows.



Added Value

There's never been a better time to become a Friend of the Whitworth

You will see from the mailing that you have been sent one of our brand new membership leaflets. It shows a stunning image by Keith Vaughan, a major UK artist and an artist's impression of the equally stunning new Gallery, which we will enjoy in just a few months! This gives you details of the new membership subscriptions.

It was decided at the last annual meeting that these should increase from October 1, 2014. There has not been an increase since 2006. The annual subscription will be £30 for single members and £50 for joint (at same address). This is great value for money – we are biased, of course.

You have the opportunity to go to many events, trips at home and overseas, lectures, social events in the new Gallery, exhibition openings, information about the Gallery and Friends from this

newsletter, 'behind the scenes' possibilities and more. Discounts alone are excellent value – money off in the Gallery shop – this is to be filled with designer items, books, jewellery, arty artefacts – think Christmas if you can bear it. Further discounts will be available in the Gallery café in the trees. Manchester Art Gallery also offers 10% discount in their shop and café on production of your membership card.

Members have further details in this mailing or potential members please visit the website or contact the membership secretary at Friends of the Whitworth, Whitworth Art Gallery, Oxford Road, Manchester M15 6ER.

**Friends join
a friend!**

We would love you to spread the word about joining the Friends – tell them of our website:

www.friendsofthewhitworth.org.uk
where they may join online.

North West BAfM Conference 2014

It's always good to chat and network

The annual North West region BAfM conference was this year at Rochdale Art Gallery Touchstones hosted by Friends and staff. They made everyone very welcome. Guest speakers included artist Liam Spencer with his vibrant canvases of north west urban scenes and landscapes and his new interest in American life. Dinah Winch from Gallery Oldham talked of their beautiful ceramic collection, David Morris, conservation adviser and former Rochdale conservation and design manager enthused on his passion for the Arts and Crafts architect Edgar Wood.

The Friends of the Whitworth are members of BAfM (British Association of Friends of Museums) – an annual conference was held at the Whitworth a few years ago. It is an opportunity to meet with other Friends' organisations, hear what they are doing and share ideas – many a future visit is hatched. BAfM's national annual conference and AGM is in Swansea 26-28 September 2014. See www.bafm.org.uk for more.



Dinah Winch, Bernard Rostron, NW region chairman and Beryl Rostron



Another attentive Friend



Rosemary Marsh and Liz Cave



Beryl Rostron is intrigued



Liam Spencer



Looking at Mary Griffiths work in Touchstones

'Ambassadors' for the Friends

In the Spring 2014 friends' perspective and the mailing information we asked you to share your passion for the Gallery as an 'ambassador' for the Friends.

We had a great response, but let us know if more of you would like to join. It will be fun and worthwhile.

Green fingered volunteers needed

Fiona Cariss, volunteer coordinator is also recruiting for volunteers. The green fingered amongst you might like to help (come rain or shine!) in the new landscapes designed by Sarah Price. Contact: fiona.cariss@manchester.ac.uk to volunteer.

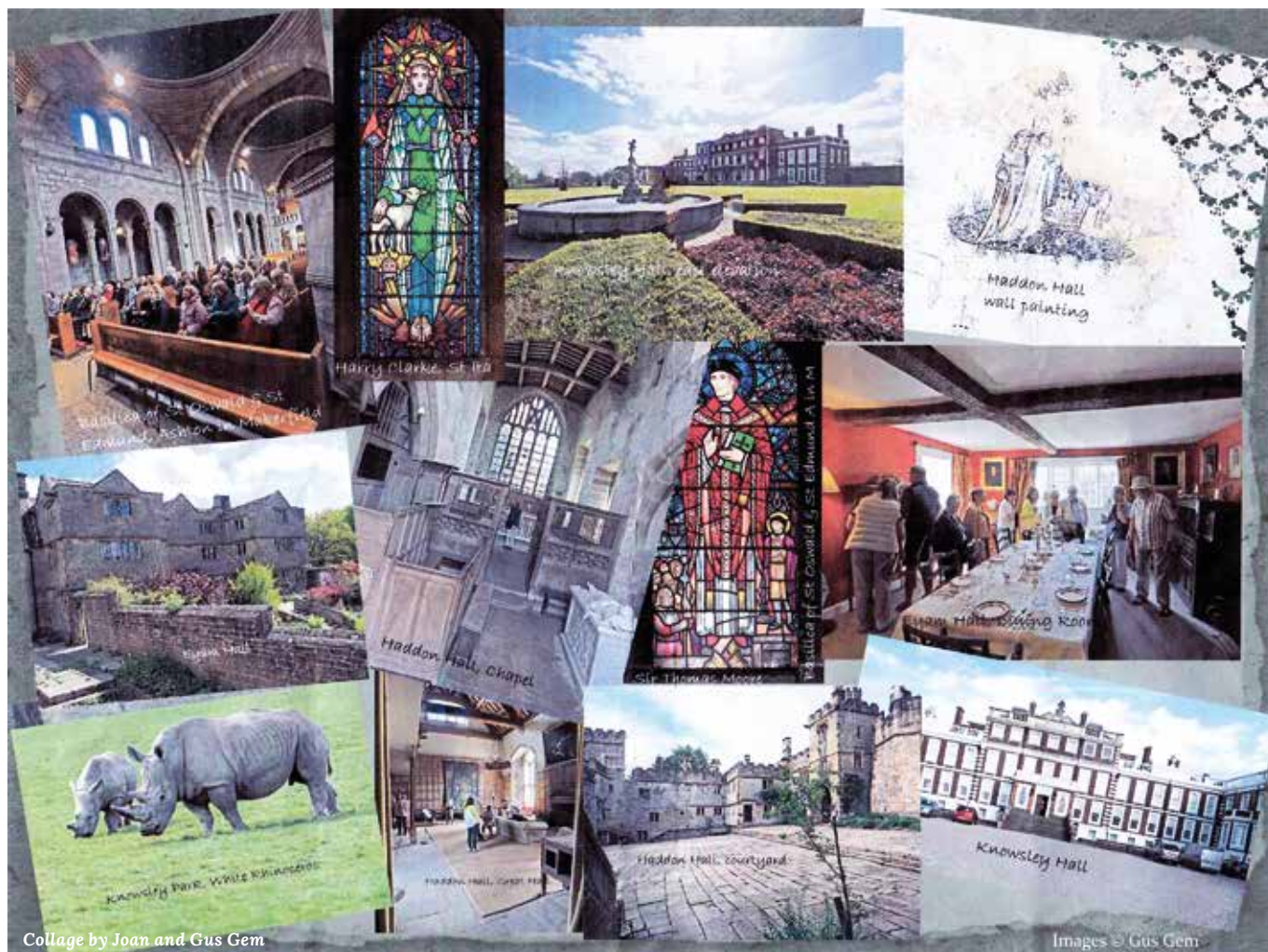


Ryan Gander

We're closed, but catch the imaginative work of Ryan Gander at Manchester Art Gallery – until 14 September.

Some of the many places visited by Friends

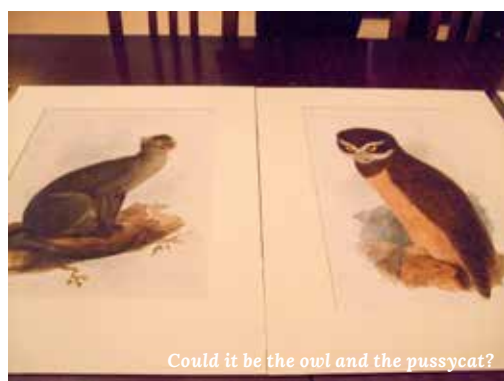
One of the highlights was to Knowsley Hall, where we saw watercolours by artist and nonsense poet Edward Lear (1812-1888). He spent many years entertaining and teaching the family of Lord Derby.



Collage by Joan and Gus Gem



Edward Lear watercolours



Could it be the owl and the pussycat?



Knowsley interior with Stephen Lloyd, curator

Why not take this once in a lifetime opportunity to really make a difference to the Whitworth? All donations, large or small are welcome - please send cheques payable to the Friends of the Whitworth at the address below...

Chairman, Friends of the Whitworth, The Whitworth Art Gallery, University of Manchester, Oxford Road, Manchester, M15 6ER.

Editor: Gill Crook. If you have any ideas for Friends' Perspective I would be pleased to hear from you. Contact me at fow@manchester.ac.uk